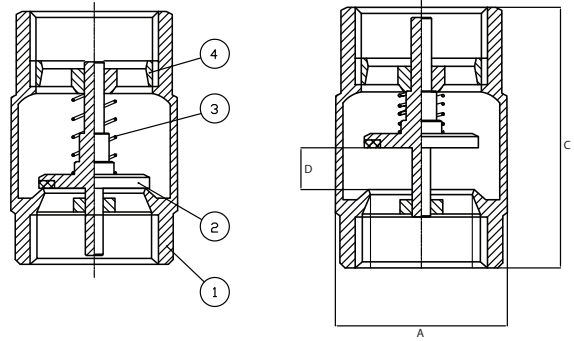


RE-GE

Valvole di ritegno in ottone / Brass check valves



Modello / Model
RE-GE

Materiale / Material
Ottone / Brass

Tenuta / Seal
NBR

DN
15 – 100

PN
25-12

Caratteristiche tecniche / Construction features

- **Valvole di ritegno monoblocco smontabili (solo fino a 2")** / Removable and monobloque (only up to 2") check valve
- **Connessioni filettate gas femmina secondo** / Threaded ends female gas according to UNI ISO 228/1
- **Pressione minima di apertura** / Minimum opening pressure 0,04 bar
- **Pressione nominale di esercizio** / Nominal working pressure
25 bar (da/from 1/2" a/to 1")
18 bar (da/from 1" 1/4 a/to 2")
12 bar (da/from 2"1/2 a/to 4")
- **Temperatura di esercizio** / Working temperature
-20°C – +100°C Aria / Air
-20°C – +60°C Gas
0°C – +100°C Acqua / Water

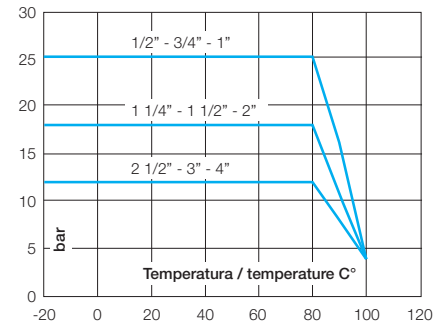
Dimensioni e pesi / Dimensions and weights

Codice Code	Misura Size	DN	PN	Peso in gr. Weight in gr.	KV m³/h	Dimensioni in mm Dimensions in mm		
						ØA	C	D
931204	1/2"	15	25	110	4,74	30,0	50,0	7,5
931205	3/4"	20	25	175	8,7	36,5	57,0	8,5
931206	1"	25	25	260	13,61	43,0	65,0	10,5
931207	1" 1/4	32	18	375	21,38	53,0	70,0	11
931208	1" 1/2	40	18	525	31,63	64,5	75,5	12
931209	2"	50	18	800	46,7	79,5	81,5	14
931210	2"1/2	65	12	1.555	78,77	104	104	22
931211	3"	80	12	2.335	111,5	124	113	23,5
931212	4"	100	12	3.665	176,9	155	132	27

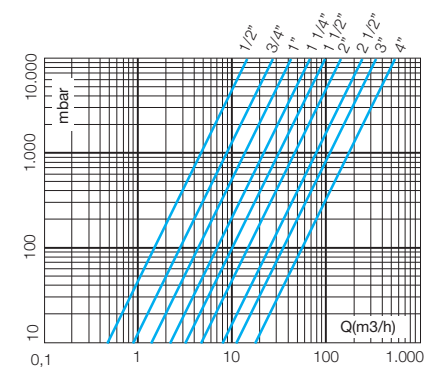
Componenti e materiali / Components and materials

1	Corpo / Body	Ottone forgiato conforme a / Hot-forged brass according to UNI-EN 12165
2	Otturatore / Flow control disc	Ottone + NBR / Brass + NBR
3	Molla / Spring	Acciaio inox / SS Aisi 304
4	Anello Chiusura / Closing Ring	Ottone / Brass

Diagramma pressione temperatura / Pressure temperature diagram



Perdite di carico / Friction losses diagrams



**Su richiesta /
On request**

Filettatura NPT / NPT thread