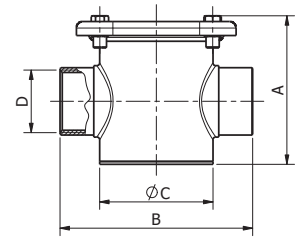
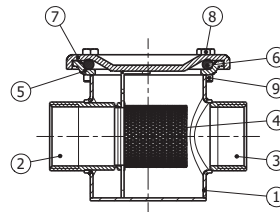


M1

# LINIA / 2.0

Filtri in linea /  
In-line filters



Modello / Model  
**LINIA 2.0**

Materiale / Material  
Aisi 316

DN  
15 – 40

PN  
16

## Caratteristiche tecniche / Construction features

- **Lavorazione: acciaio inox stampato** /  
Manufacturing process: pressed stainless steel
- **Trattamento superficiale sgrassaggio, decapaggio ed elettrolucidatura** /  
Surface treatment degreasing, pickling and electropolishing
- **Connessioni filettate gas femmina secondo** / Threaded ends gas female according to UNI ISO 228/1
- **Saldature a TIG senza apporto di materiale** / Welded joints: made with TIG method without any additional material
- **Pressione nominale di esercizio** / Nominal working pressure 16 bar
- **Temperatura di esercizio** / Working temperature -20°C – +180°C
- **Grado di filtrazione** / Filtration 800 μ (da/from 1/2" a/to 1") 1000 μ (1" 1/4 e/and 1"1/2)

## Componenti e materiali / Components and materials

|    |  |                               |
|----|--|-------------------------------|
| 1  | <b>Corpo</b> / Body                              | Acciaio inox /<br>SS Aisi 316 |
| 2  | <b>Manicotto lato mandata</b> /<br>Outlet end    | Acciaio inox /<br>SS Aisi 316 |
| 3  | <b>Manicotto lato aspirazione</b> /<br>Inlet end | Acciaio inox /<br>SS Aisi 316 |
| 4* | <b>Filtro</b> / Filter                           | Acciaio inox /<br>SS Aisi 316 |
| 5  | <b>Base coperchio</b> /<br>Cover base            | Acciaio inox /<br>SS Aisi 316 |
| 6* | <b>Anello OR</b> / O-ring                        | FPM                           |
| 7* | <b>Coperchio</b> / Cover                         | Acciaio inox /<br>SS Aisi 316 |
| 8* | <b>Vite TE M5</b> /<br>Screw TE M5               | Acciaio inox /<br>SS Aisi 304 |
| 9  | <b>Rivetto</b> / Rivet                           | Acciaio inox /<br>SS Aisi 304 |

\* **Ricambi disponibili** / Spare parts

## Dimensioni e pesi / Dimensions and weights

| Codice<br>Code | Misura<br>Size | DN | PN | Peso<br>in gr.<br>Weight<br>in gr. | Dimensioni in mm<br>Dimensions in mm |     |      |          |
|----------------|----------------|----|----|------------------------------------|--------------------------------------|-----|------|----------|
|                |                |    |    |                                    | A                                    | B   | C    | D        |
| 900815         | 1/2"           | 15 | 16 | 257                                | 65                                   | 78  | 42,4 | 1/2" F   |
| 900816         | 3/4"           | 20 | 16 | 368                                | 72                                   | 84  | 48,3 | 3/4" F   |
| 900817         | 1"             | 25 | 16 | 570                                | 79                                   | 105 | 48,3 | 1" F     |
| 900818         | 1" 1/4         | 32 | 16 | 880                                | 90                                   | 116 | 76,1 | 1" 1/4 F |
| 900819         | 1" 1/2         | 40 | 16 | 1.130                              | 102                                  | 137 | 88,9 | 1" 1/2 F |